

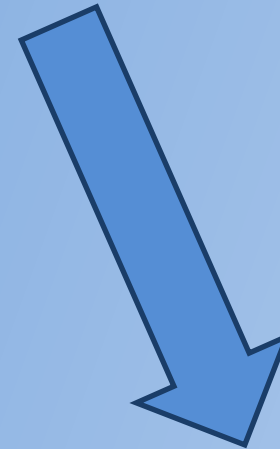
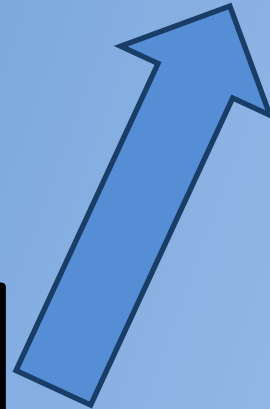
UGRA Volunteer Summer Study 2024



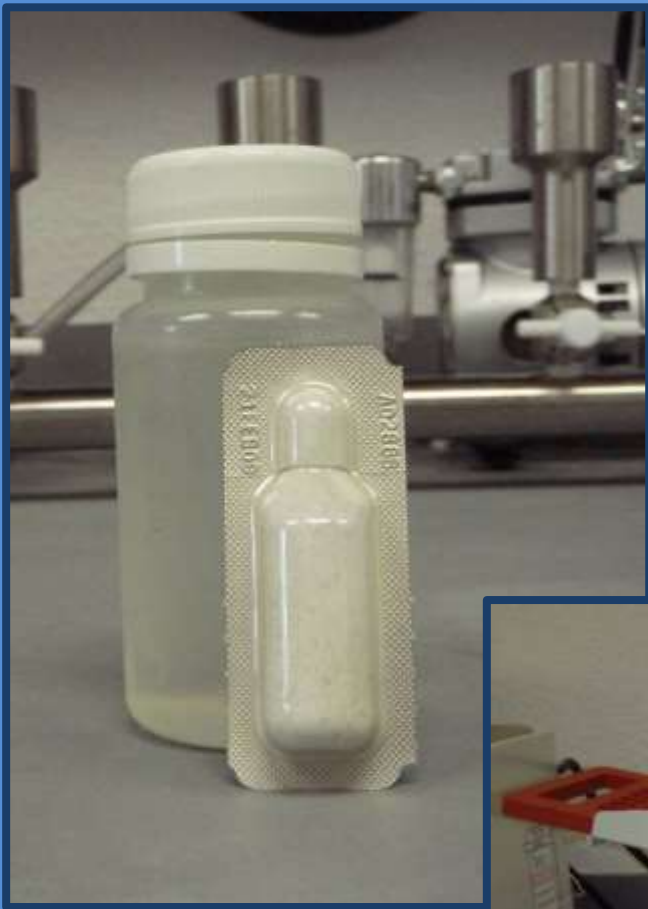
Goals

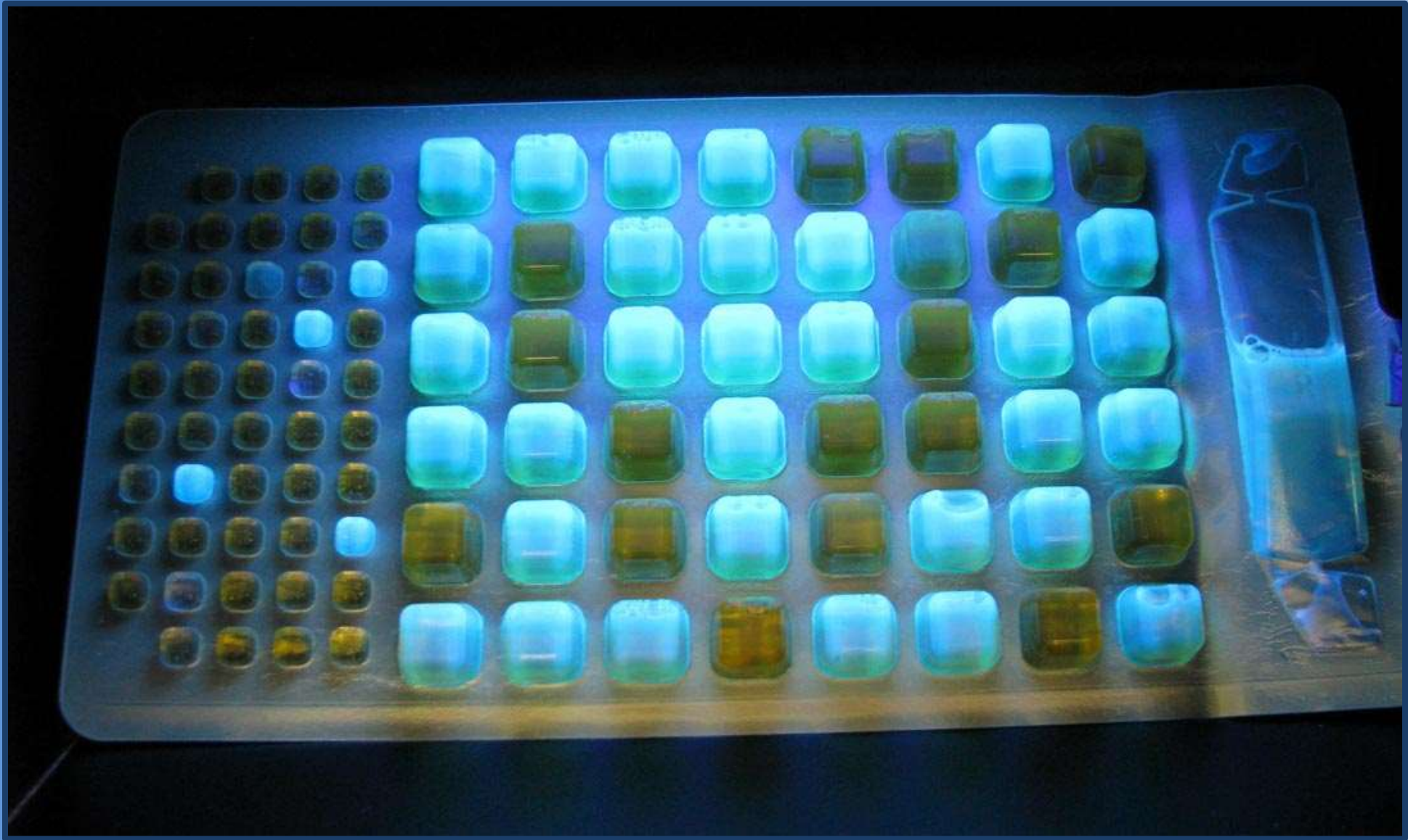
- Complement current UGRA summer bacteria sampling
- Identify areas in need of further investigation
- Include interested members of the community in water quality testing
- Build relationships with river stewards

Life of a Bacteria Sample



Lab





Copy WO

WorkOrder Index

WorkOrder	ClientID
2008572	
2008566	
2008559	
2008558	
2008556	
2008553	
2008542	
2008527	
2008512	
2008504	
2008497	
2008489	
2008476	
2008475	
2008474	
2008473	
2008469	
2008466	
2008464	
2008462	
2008455	

Audit Trail:

Record: 14

Login is LOG

Lab Report

Upper Guadalupe River Authority Date: 9/2/2020

125 Lehmann Dr. Suite 100, Kerrville, TX 78028
(830) 896-5445
TCEQ State Lab ID: 48145

CLIENT: UGRA Public Education **Lab Order:** 2008558
125 Lehmann Dr., Ste. 100
Kerrville, TX 78028
tbushnoe@ugra.org
Ph: 8308965445

Project: Volunteer Summer Study
System ID No: Private

Lab ID: 2008558-001 **Collection Date/Time:** 8/27/2020 10:50:00 AM
Sample Site: Flat Rock Dog Park **Source:** SURFACE WATER
Sampled By: Sherry Wilson **Sample Type:** Grab
Field C12 Residual: NA

Analyses	Result	PQL	Qual	Units	DF	Date Analyzed
BACTERIA MPN BY QUANTITRAY Method : SM 9223 B (N)						
E. coli (enumeration) (N)	1	1.000	Q	MPN/100ml	1	8/27/2020 3:00:00 PM
Total coliforms (enumeration)	> 2420	1.000	Q	MPN/100ml	1	8/27/2020 3:00:00 PM

Lab ID: 2008558-002 **Collection Date/Time:** 8/27/2020 11:28:00 AM
Sample Site: LHP Footbridge Below Dam **Source:** SURFACE WATER
Sampled By: Sherry Wilson **Sample Type:** Grab
Field C12 Residual: NA

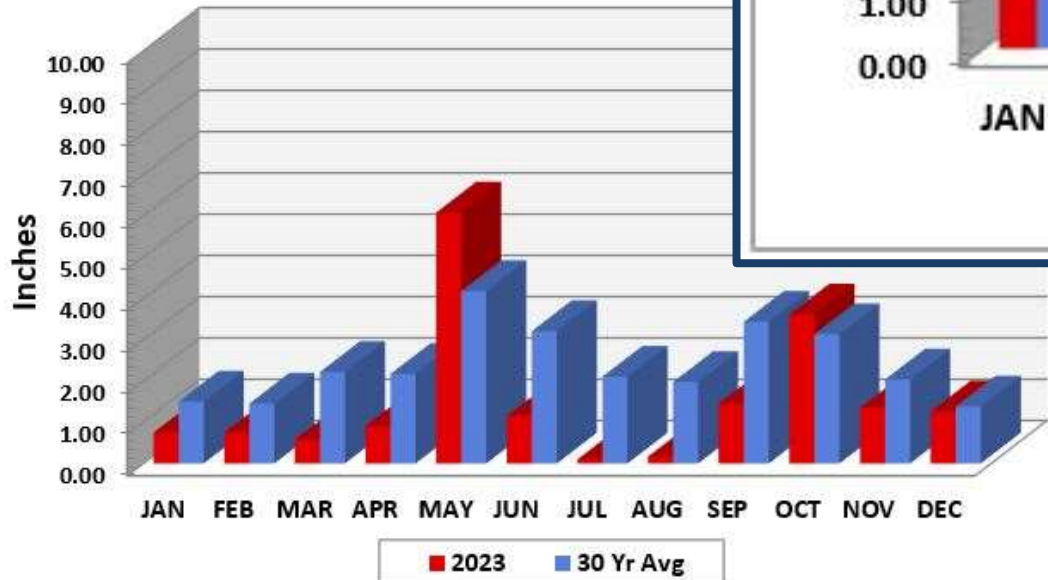
Analyses	Result	PQL	Qual	Units	DF	Date Analyzed
BACTERIA MPN BY QUANTITRAY Method : SM 9223 B (N)						
E. coli (enumeration) (N)	83	1.000	Q	MPN/100ml	1	8/27/2020 3:00:00 PM
Total coliforms (enumeration)	> 2420	1.000	Q	MPN/100ml	1	8/27/2020 3:00:00 PM

Quality Control sample results available upon request.

Suffix : (N) - NELAP Accredited Analysis
Qualifiers: Q - Data qualified: see Case Narrative. All required Quality Control was acceptable unless the result is flagged with a "Q" or otherwise noted in the Case Narrative.
Abbreviations : PQL - Practical Quantitation Limit; DF - Dilution Factor

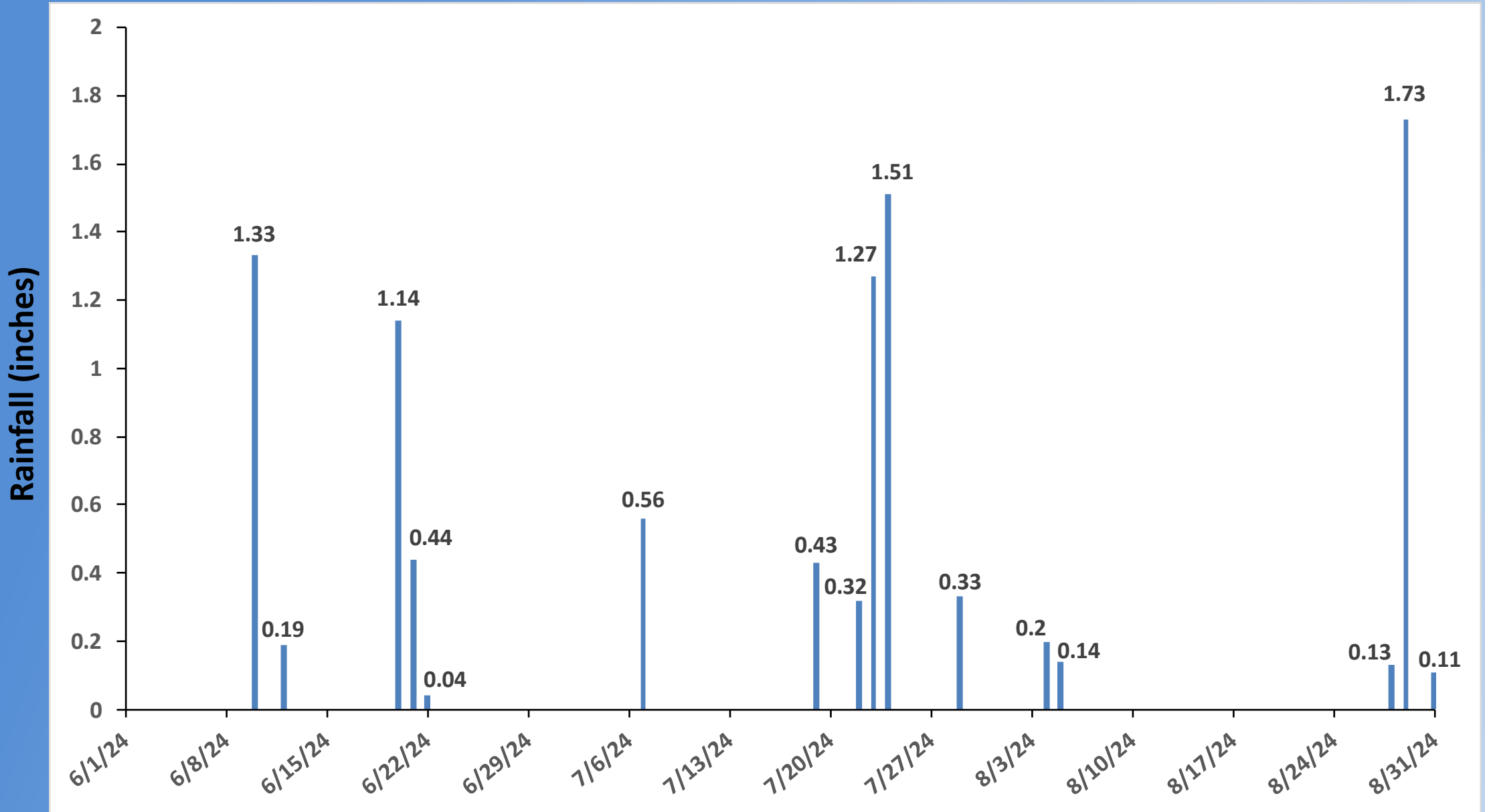
Text	Units	Qual	PQL	DF	MDL
83	MPN/100r	Q		1	1
> 2420	MPN/100r	Q		1	1

Rainfall By Month



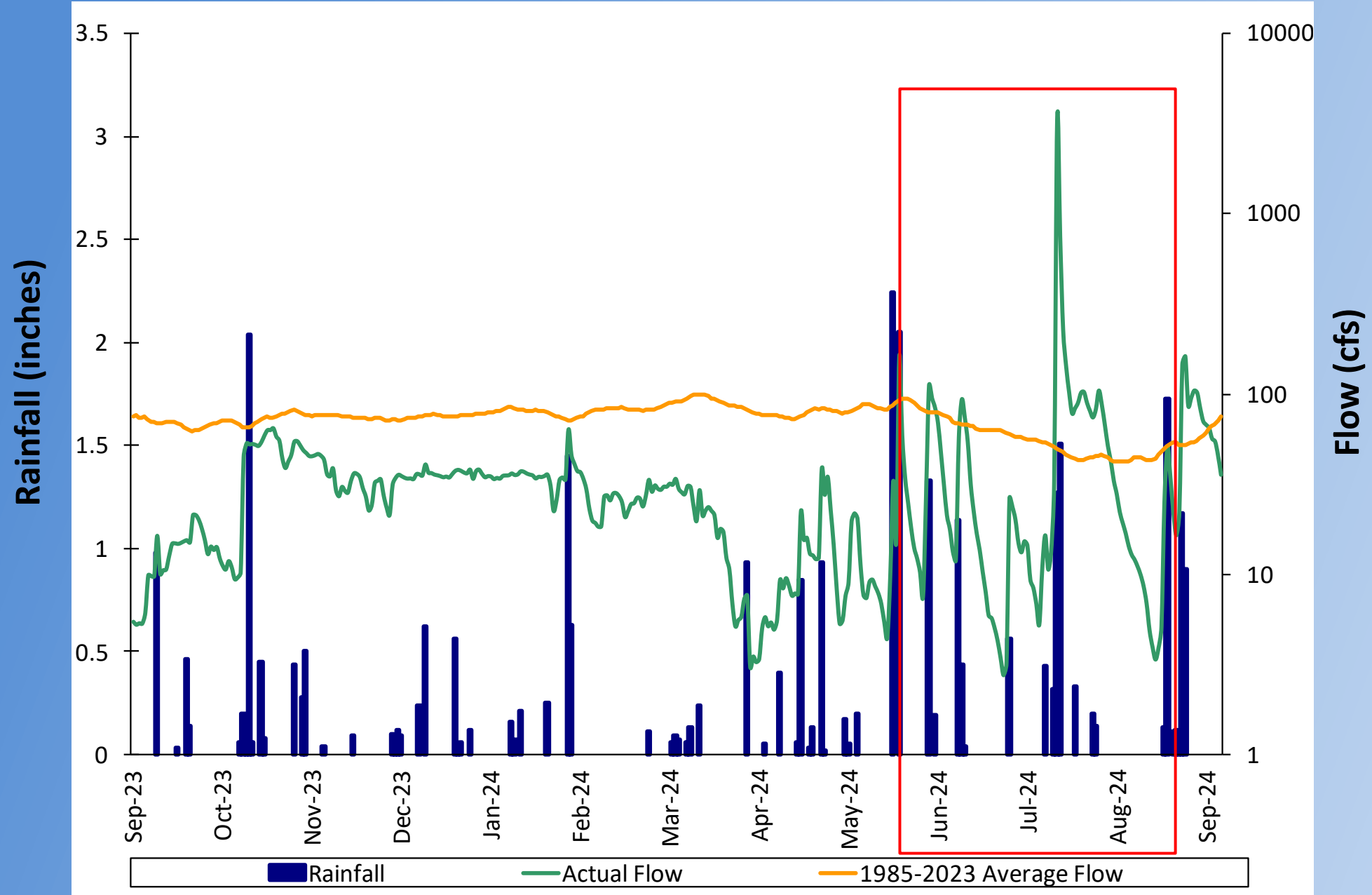
Knippling-Bushland U.S. Livestock Insects Research Laboratory: Kerrville, TX

Rainfall Totals June – August 2023



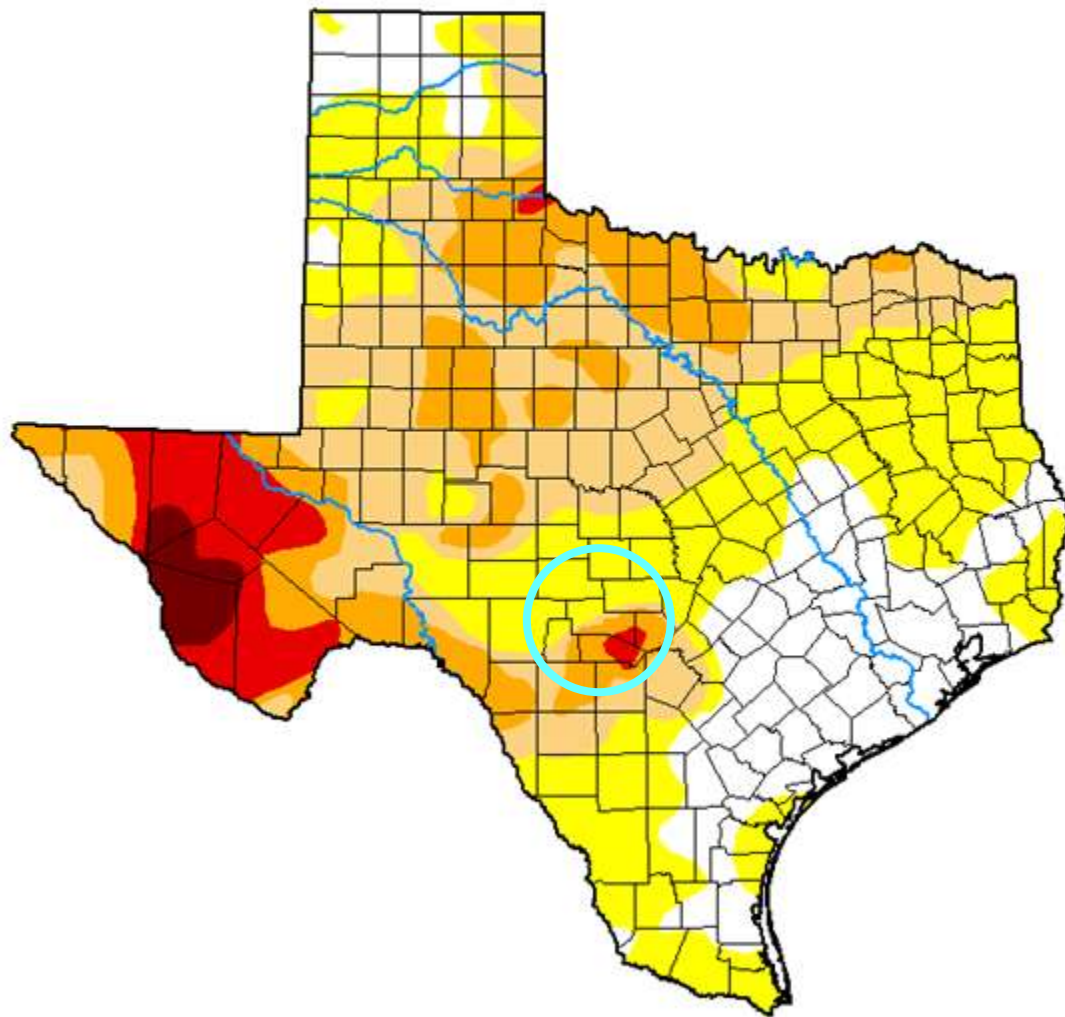
Knipling-Bushland U.S. Livestock Insects Research Laboratory: Kerrville, TX

Streamflow vs Rainfall in Kerrville

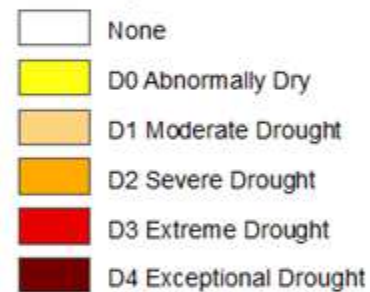


U.S. Drought Monitor Texas

August 27, 2024
(Released Thursday, Aug. 29, 2024)
Valid 8 a.m. EDT



Intensity:



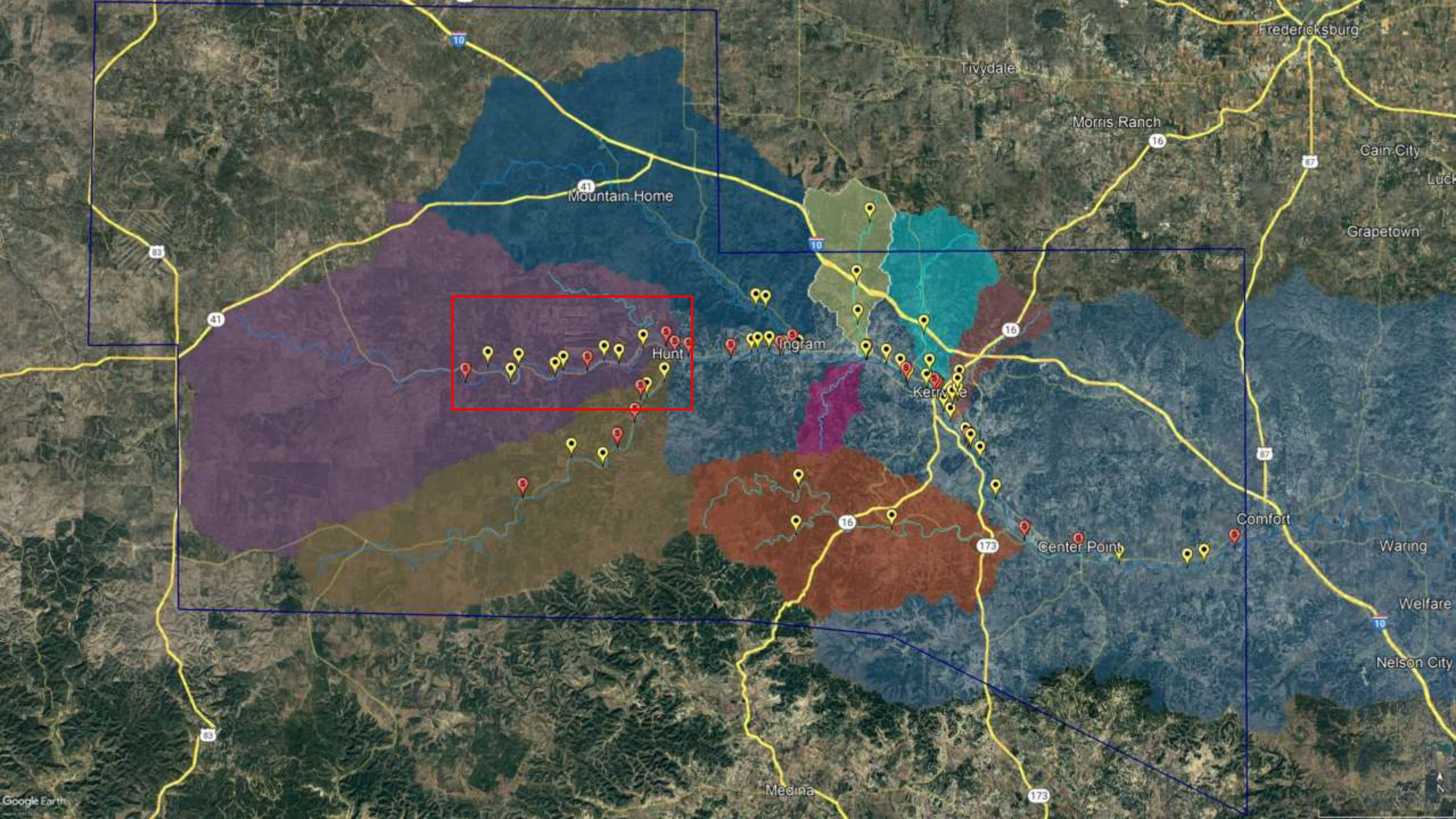
The Drought Monitor focuses on broad-scale conditions. Local conditions may vary. For more information on the Drought Monitor, go to <https://droughtmonitor.unl.edu/About.aspx>

Author:

Richard Heim
NCEI/NOAA

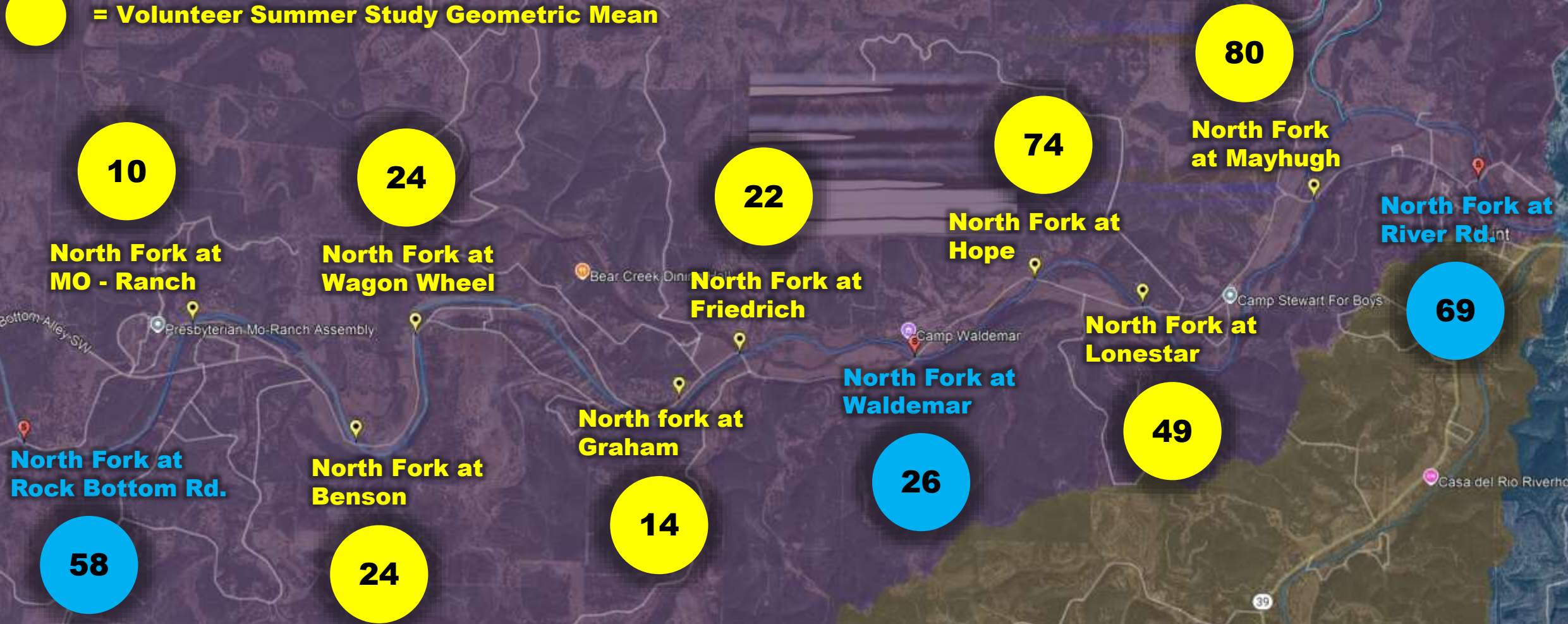


droughtmonitor.unl.edu



● = Swimability Study Geometric Mean

● = Volunteer Summer Study Geometric Mean





**NF at MO – Ranch
Sampled by MO – Ranch Staff**

**NF at Benson Crossing
Sampled by Bob and Karen Taylor**



**NF at Wagon Wheel Crossing
Sampled by Clinton Morse**



24



14

**NF at Graham Crossing
Sampled by Bob and Karen Taylor**



22

**NF at Friedrich Crossing
Sampled by Bob and Karen Taylor**

**NF at Hope Crossing
Sampled by Nancy Huffman**



74

**NF at Lonestar Crossing
Sampled by Bake Foster**

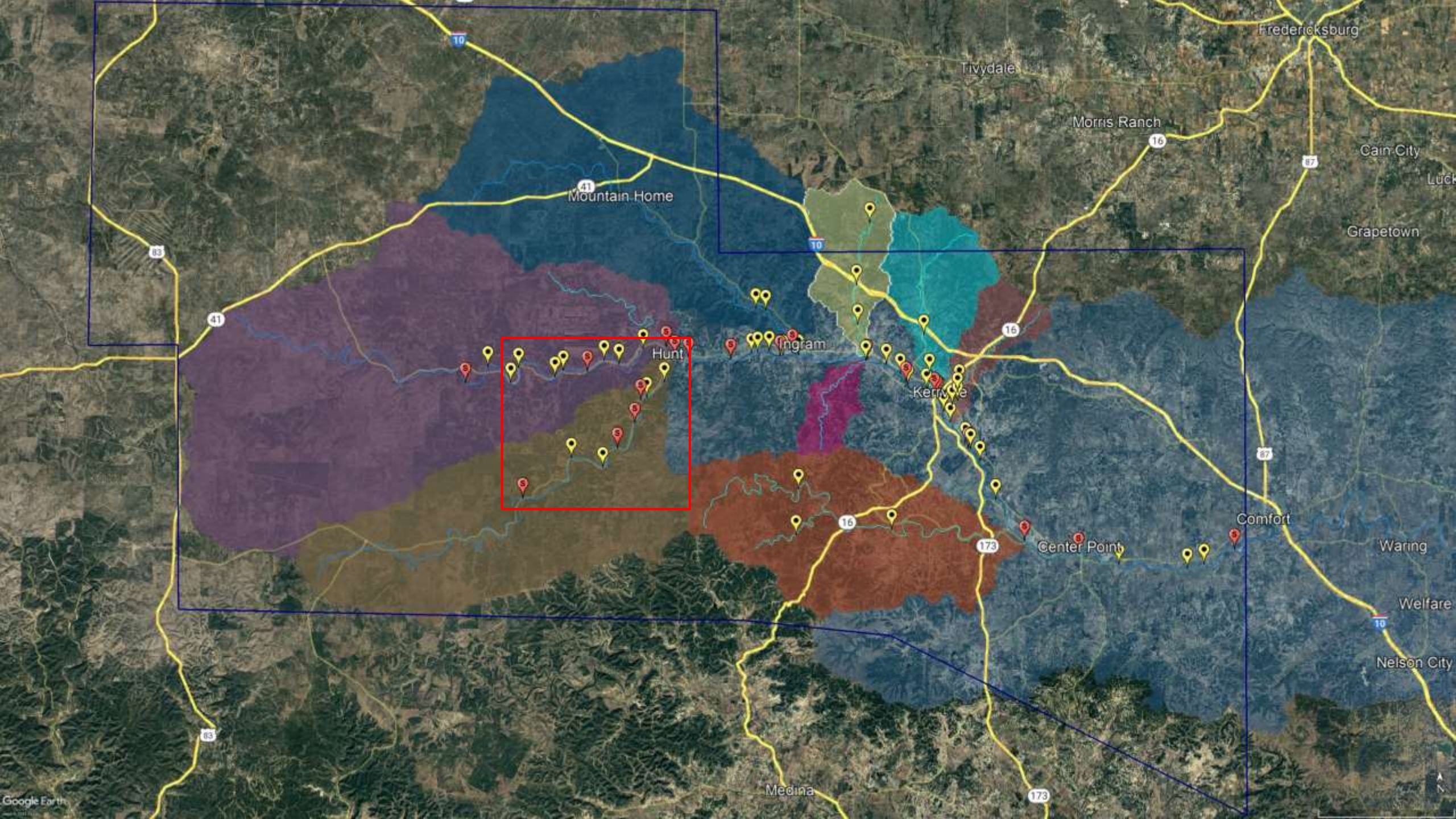


49

**NF at Mayhugh Crossing
Sampled by Bake Foster**



80





= Swimability Study Geometric Mean



= Volunteer Summer Study Geometric Mean



South Fork at Hunt Crossing



South Fork at Japonica Estates



South Fork at Flaming Arrow



South Fork Downstream from Angel Falls



South Fork at Seago Rd.



South Fork at Mystic



South Fork at La Casita

South Fork at River Inn



South Fork at Lynxhaven



**SF at La Casita Crossing
Sampled by Grant and Randee Thompson**

**SF at River Inn
Sampled by Michael McCrea**





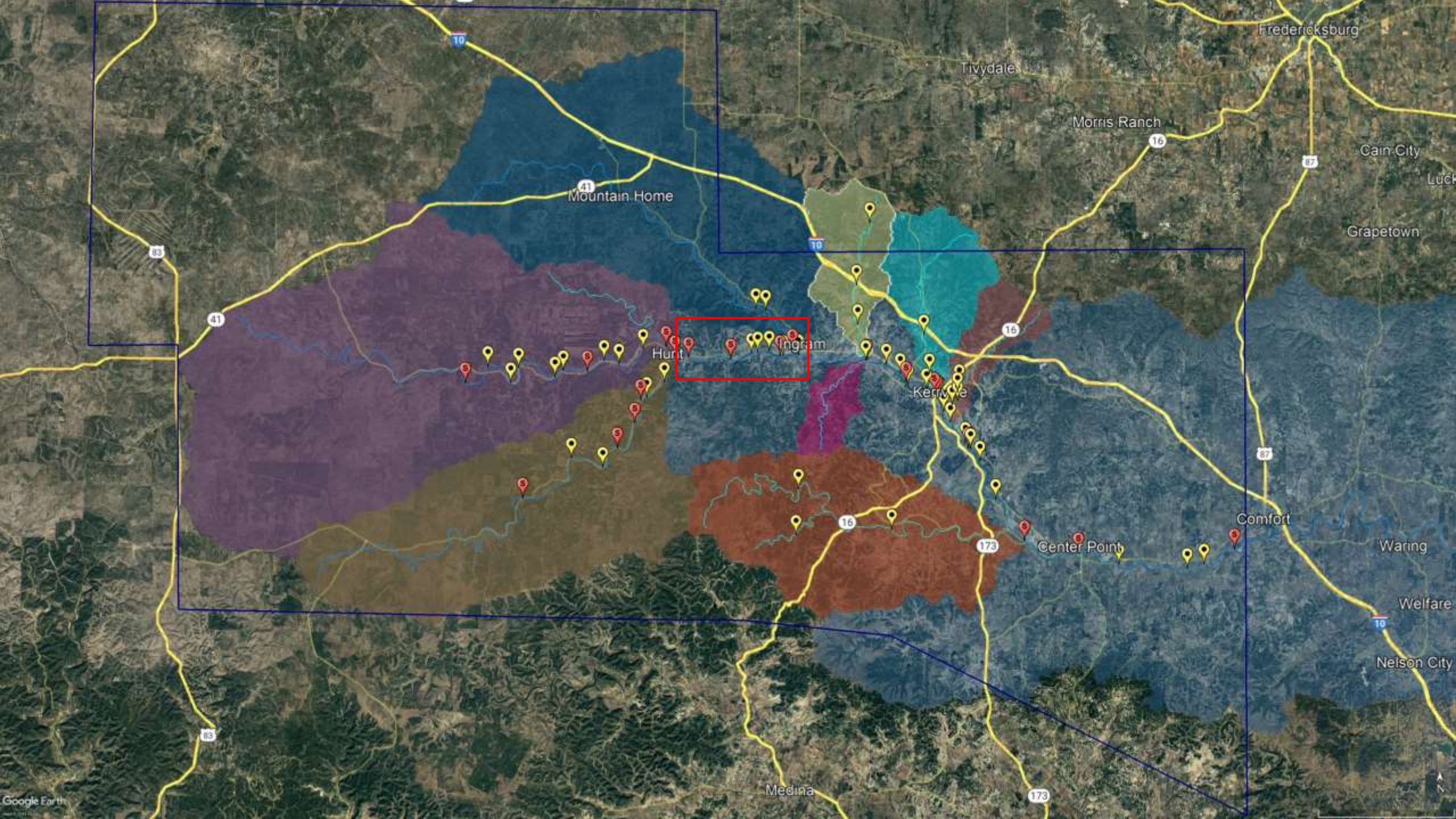
42

**SF Downstream from Angel Falls
Sampled by Dee Elliott**

**SF at Japonica Estates
Sampled by Will Sumner**



32



33 = Swimability Study Geometric Mean

60 = Volunteer Summer Study Geometric Mean

33
Guadalupe River at Schumacher

19
Guadalupe River at Kelly Creek

20
Guadalupe River at Rio Vista

14
Guadalupe River at Ingram Boat Ramp

26
Guadalupe River Downstream from Upper Cade Loop

15
Ingram Dam

60
Guadalupe River at Indian Creek Rd

53
Guadalupe River at Lower Cade Loop

**GR at Rio Vista
Sampled by Weezie Johnston**



**GR Downstream from
Upper Cade Loop
Sampled by Don Willoughby**

**GR at Ingram Boat Ramp
Sampled by Nellwyn Sadler**



14

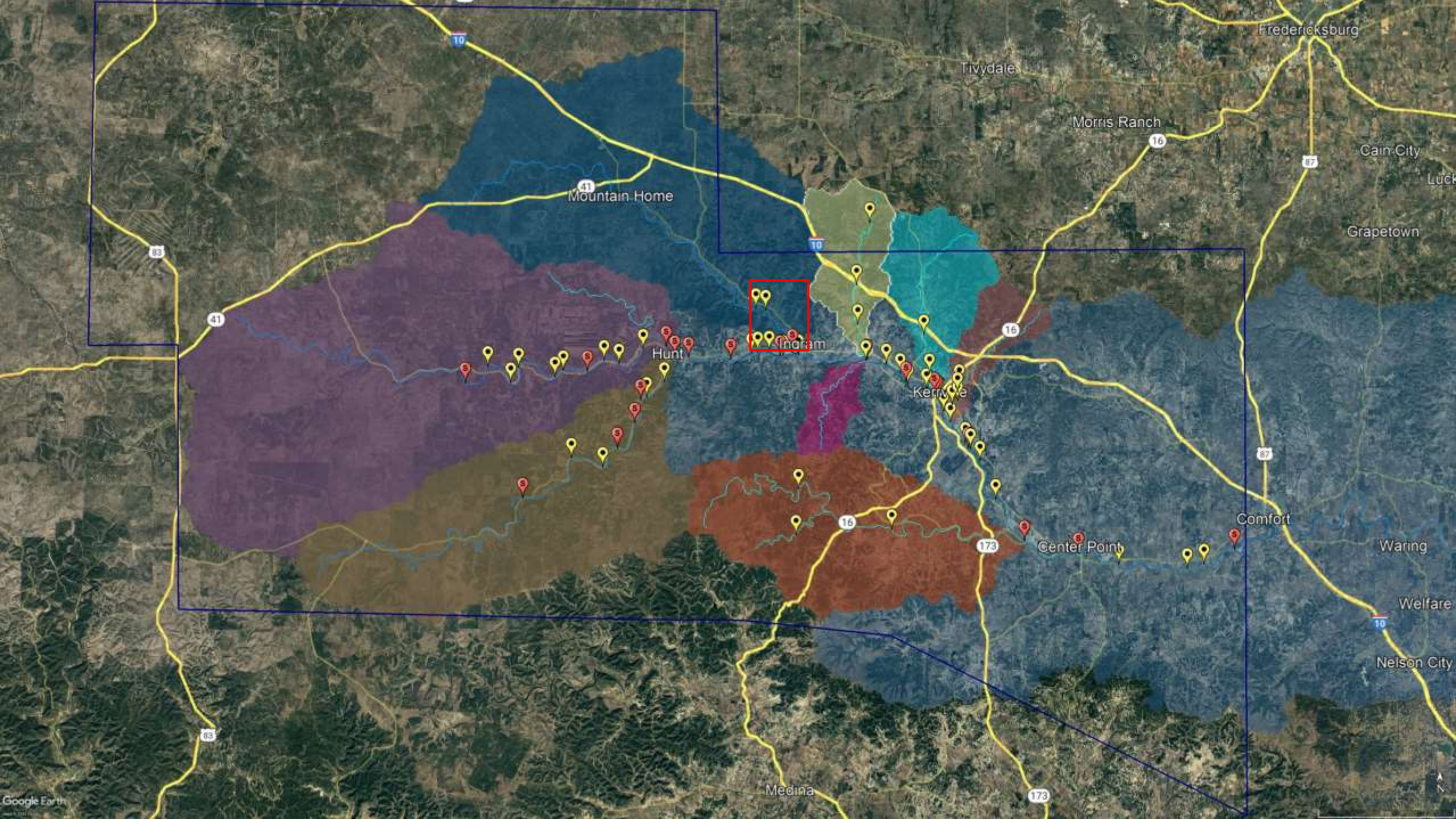


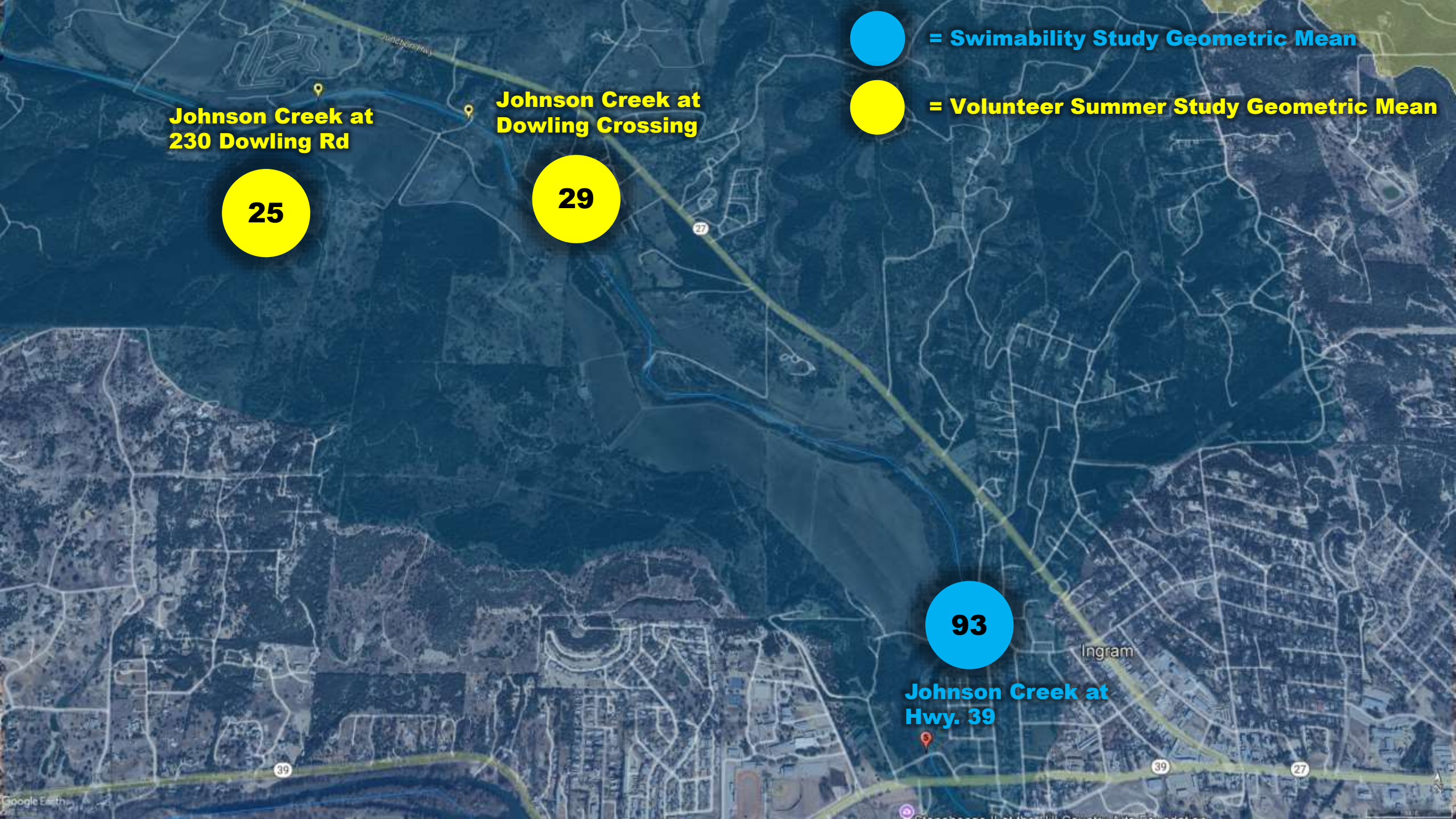
53

**GR at Lower Cade Loop
Sampled by Alice King**

**GR at Indian Creek Rd. Crossing
Sampled by Nellwyn Sadler**







**Johnson Creek at
230 Dowling Rd**

25

**Johnson Creek at
Dowling Crossing**

29

93

**Johnson Creek at
Hwy. 39**



= Swimability Study Geometric Mean



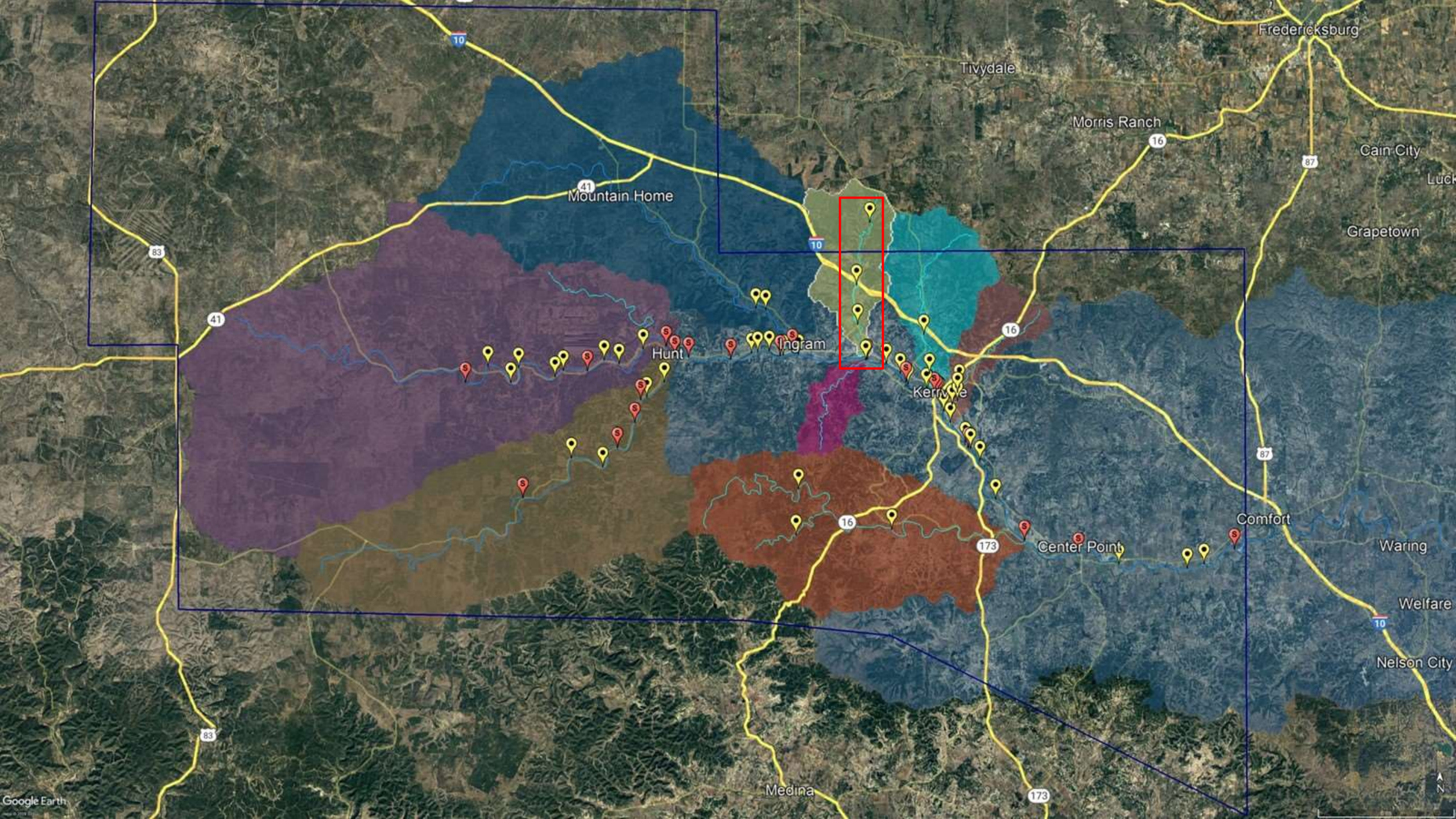
= Volunteer Summer Study Geometric Mean

**JC at 230 Dowling Rd.
Sampled by Melanie Ellsworth**



**JC at Dowling Crossing
Sampled by Melanie Ellsworth**







= Swimability Study Geometric Mean



= Volunteer Summer Study Geometric Mean

9

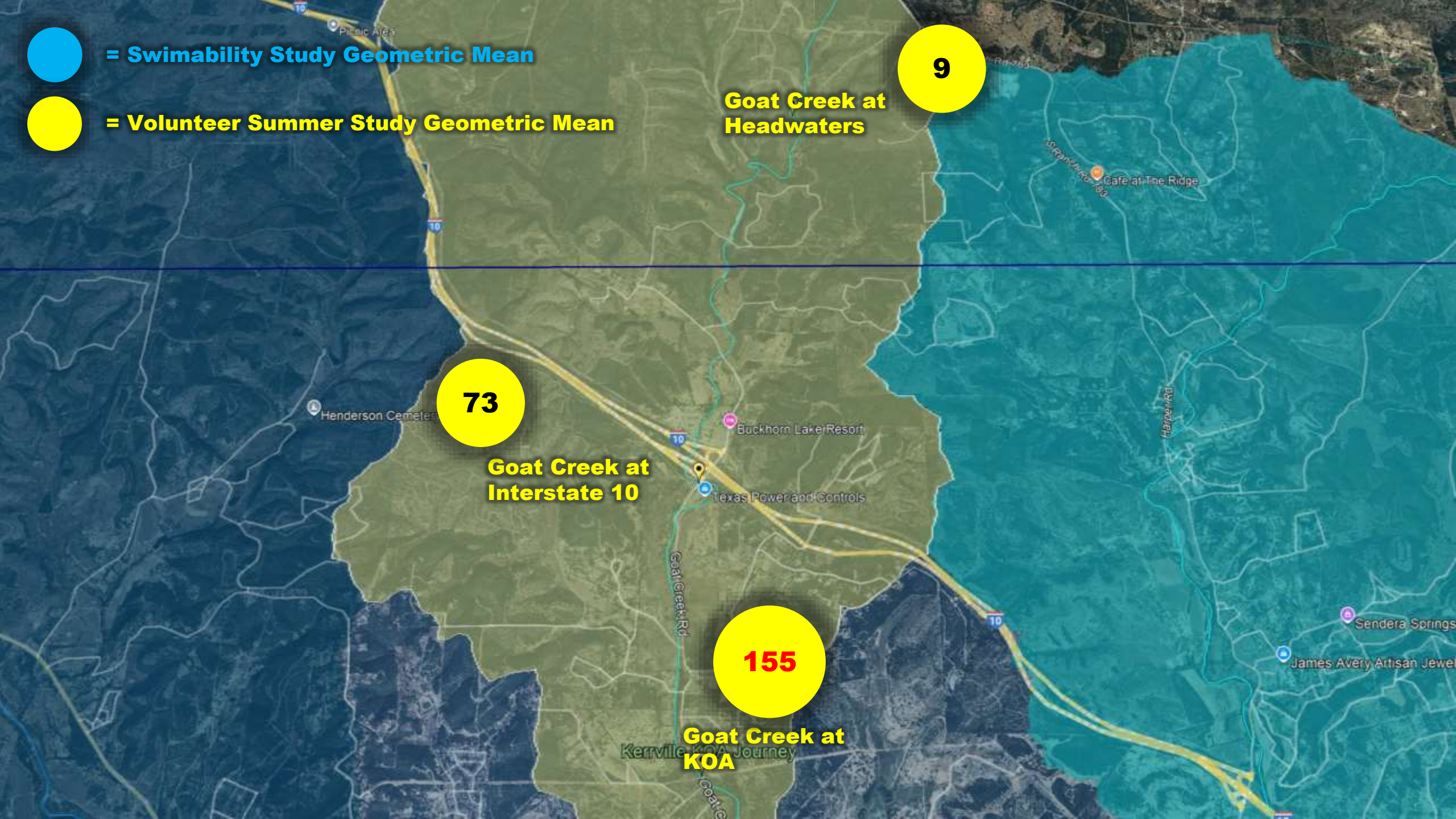
**Goat Creek at
Headwaters**

73

**Goat Creek at
Interstate 10**

155

**Goat Creek at
KOA**





= Swimability Study Geometric Mean



= Volunteer Summer Study Geometric Mean

68

**Guadalupe River at
Bear Creek Rd Crossing**

**Bear Creek at
Bear Creek Rd.**

N/A



73

**Goat Creek at Headwaters
Sampled by Maura Windlinger**



9

**Goat Creek at I-10
Sampled by Palmore Baxter**

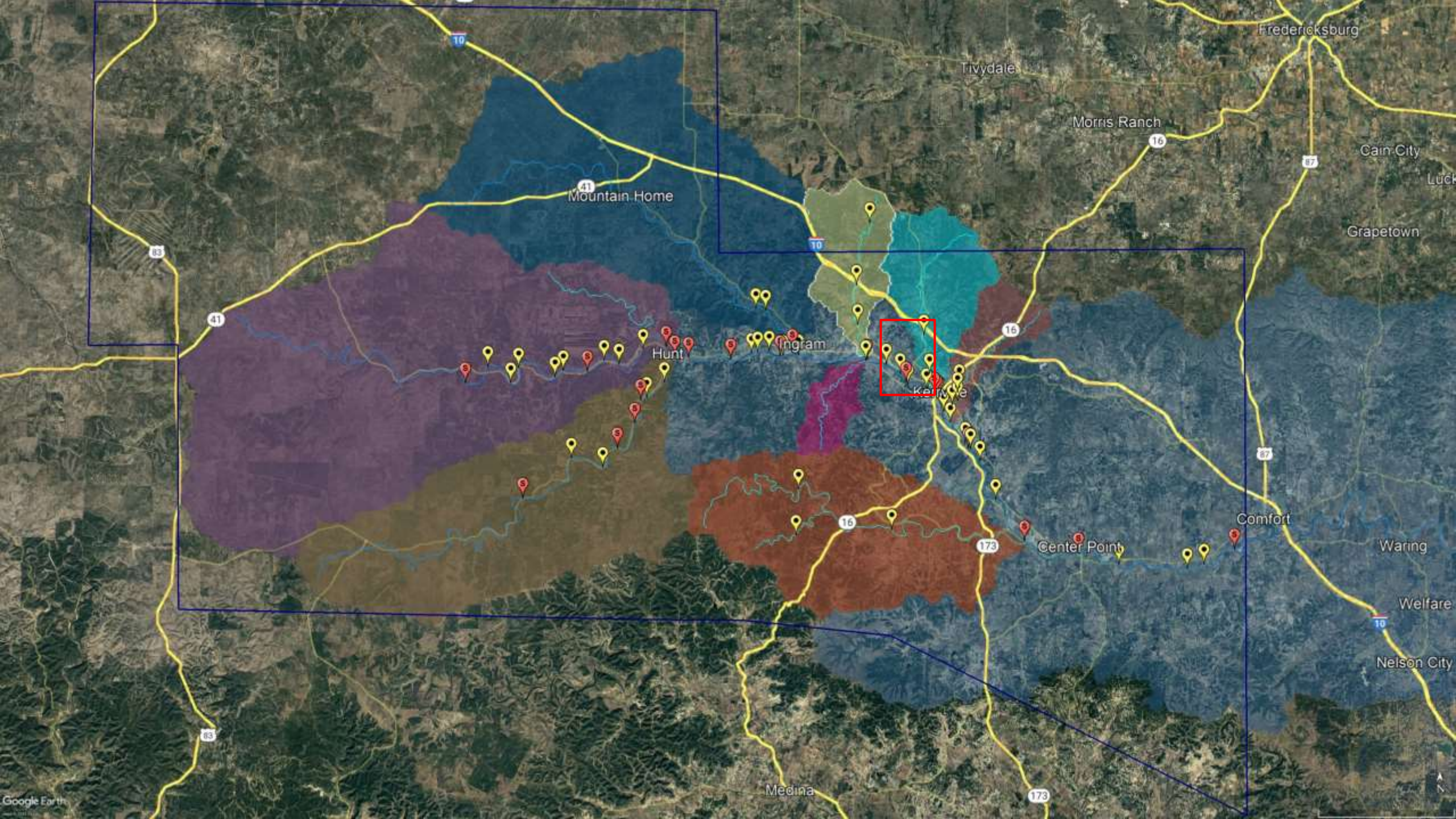


155

**Goat Creek at KOA
Sampled by Palmore Baxter**



**Bear Creek at Bear Creek Rd.
Sampled by David Bartels**





= Swimability Study Geometric Mean



= Volunteer Summer Study Geometric Mean

**Town Creek at
Town Creek Rd.**

42

78

**Nimitz Lake at
Cypress Park
(Kayak)**

119

**Town Creek at
Schreiner St.**

**Nimitz Lake at
Knapp Park
(Kayak)**

15

18

Nimitz Dam

N/A

**Town Creek at River
Trail Foot Bridge**

132

**Guadalupe River at
Guadalupe Park**

**Guadalupe River at
Francisco Lemos**

239

**GR at Cypress Park (kayak)
Sampled by Carl and Katy Kappel**



**GR at Knapp Park (kayak)
Sampled by Carl and Katy Kappel**



**GR at Guadalupe Park
Sampled by Alice King**



**Town Creek at Town Creek Rd.
Sampled by Phillip Youngblood**

**Town Creek at Schreiner St.
Sampled by Jim Gardner**

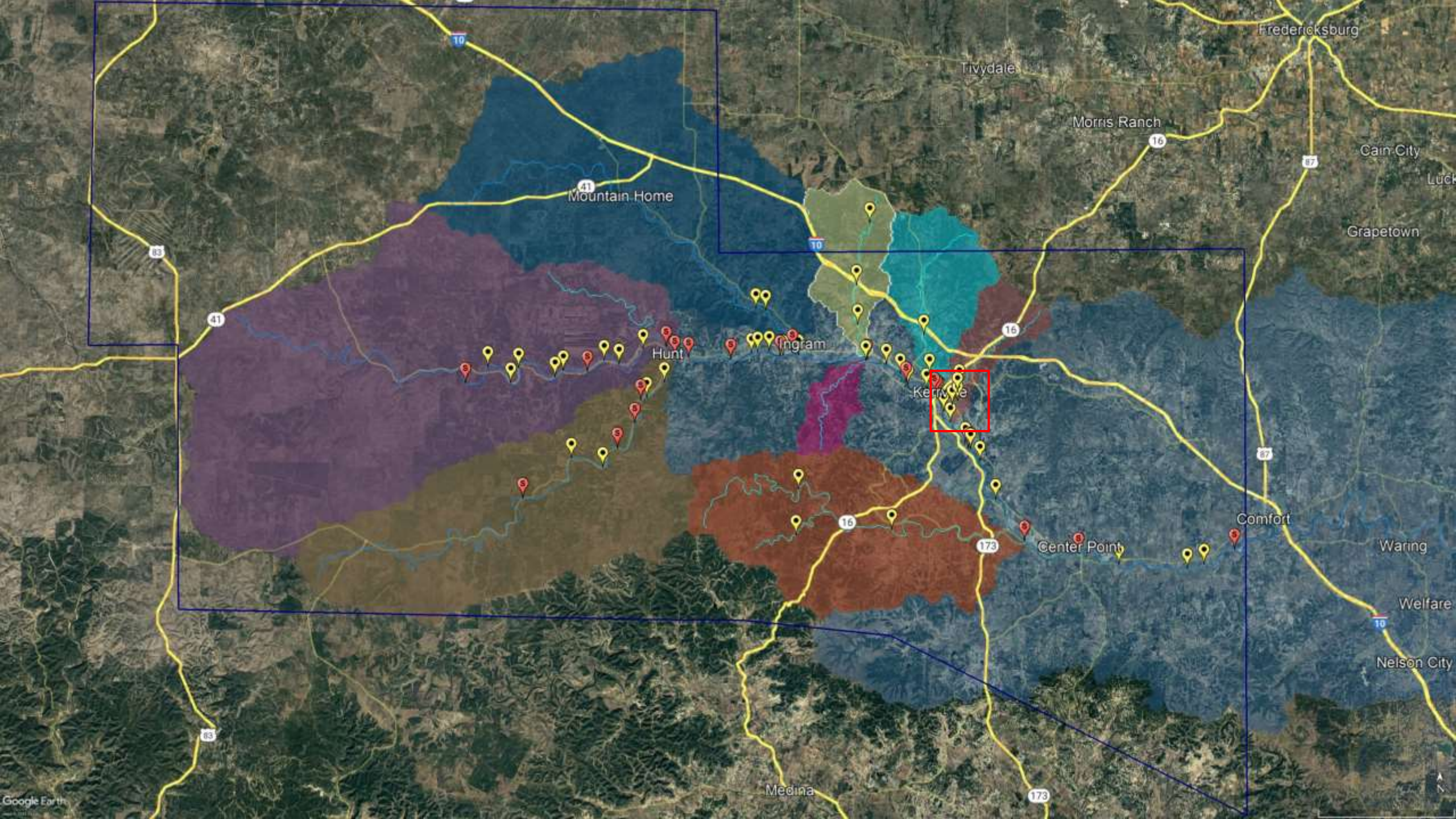


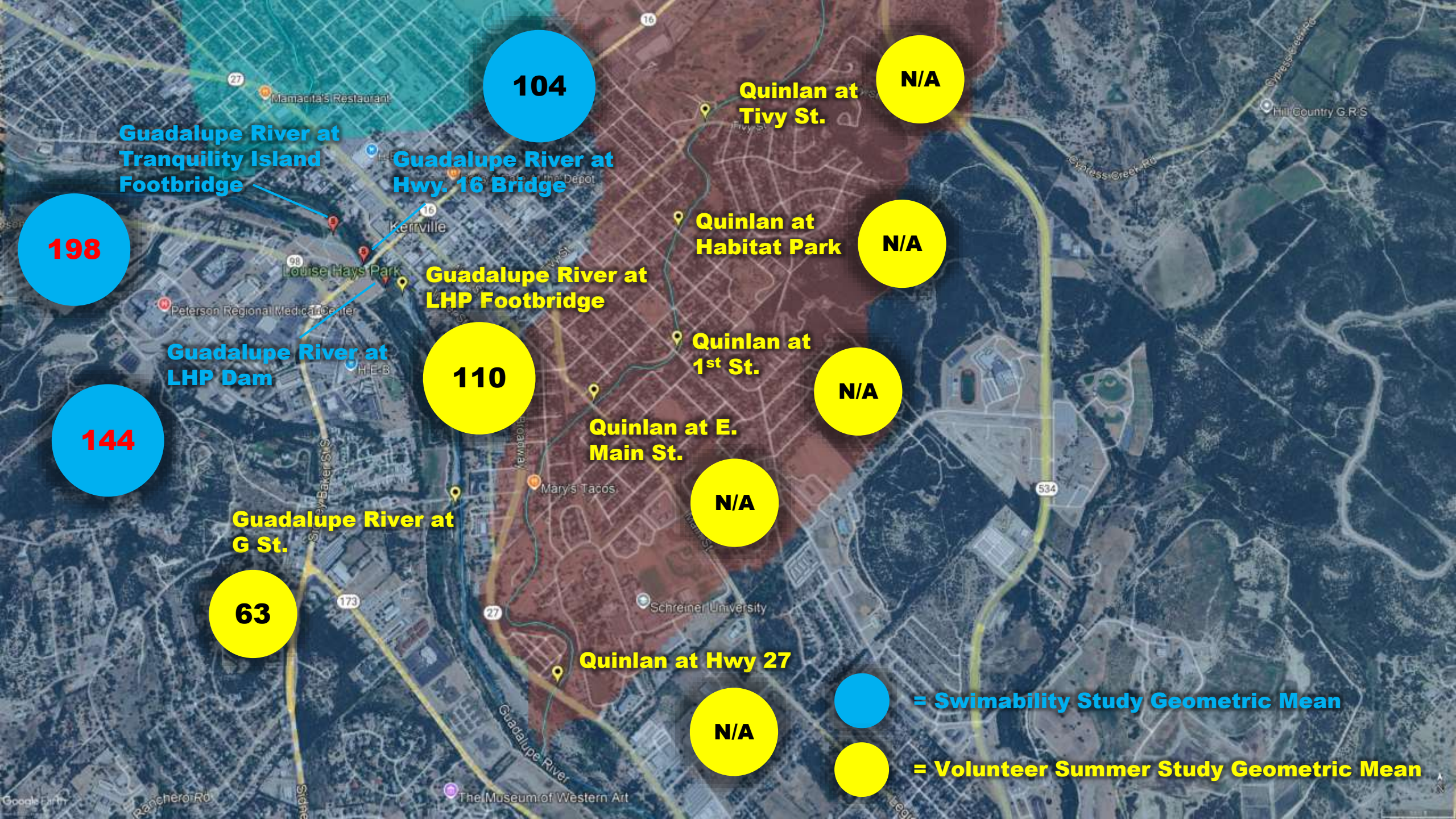


**Town Creek at River Trail Footbridge
Sampled by Michelle Yanez**

**Guadalupe River at Francisco Lemos
Sampled by Lisa Flanagan**







198

104

N/A

144

110

N/A

63

N/A

N/A

N/A

N/A

Guadalupe River at Tranquility Island Footbridge

Guadalupe River at Hwy. 16 Bridge

Quinlan at Tivy St.

Guadalupe River at LHP Dam

Guadalupe River at LHP Footbridge

Quinlan at Habitat Park

Quinlan at 1st St.

Quinlan at E. Main St.

Guadalupe River at G St.

Quinlan at Hwy 27

= Swimability Study Geometric Mean

= Volunteer Summer Study Geometric Mean



**GR at Louise Hays Park Footbridge
Sampled by Sherry Wilson**

**GR at G St.
Sampled by Deb Youngblood**





**Quinlan Creek at Tivy St.
Sampled by Leslie Jones**

**Quinlan Creek at Habitat Park
Sampled by Leslie Jones**





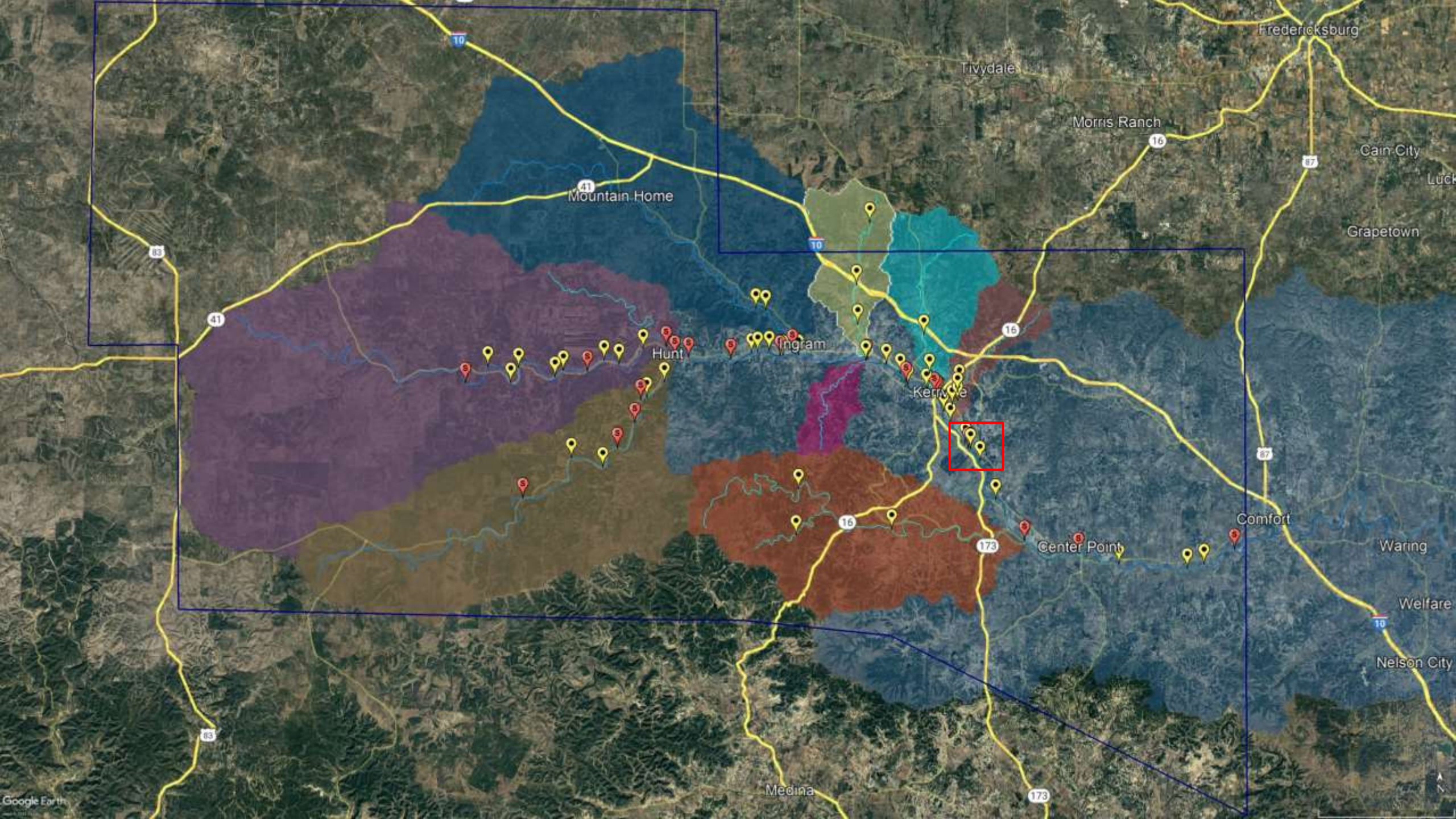
**Quinlan Creek at 1st St.
Sampled by Leslie Jones**

**Quinlan Creek at E. Main St.
Sampled by Leslie Jones**





**Quinlan Creek at Hwy. 27
Sampled by Leslie Jones**



**Guadalupe River at
3030 Riverside Dr.**

196

169

**Guadalupe River at
Kerrville - Schreiner Park**

**Guadalupe River at
Flat Rock Boat Ramp**

204

15

**Guadalupe River at
Flat Rock Dog Park**



= Swimability Study Geometric Mean



= Volunteer Summer Study Geometric Mean

**GR at 3030 Riverside Dr.
Sampled by Paul Hawkins**

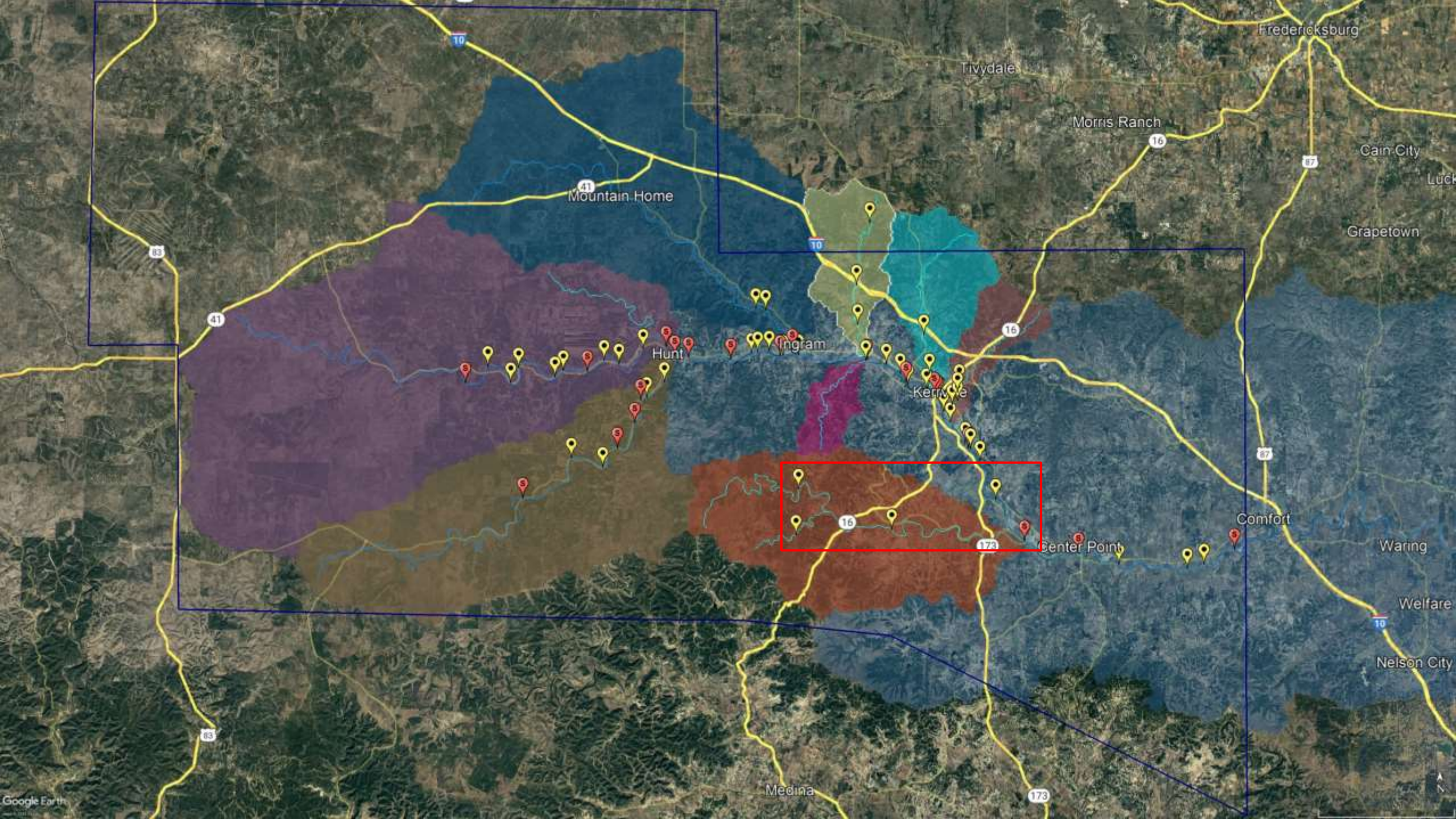


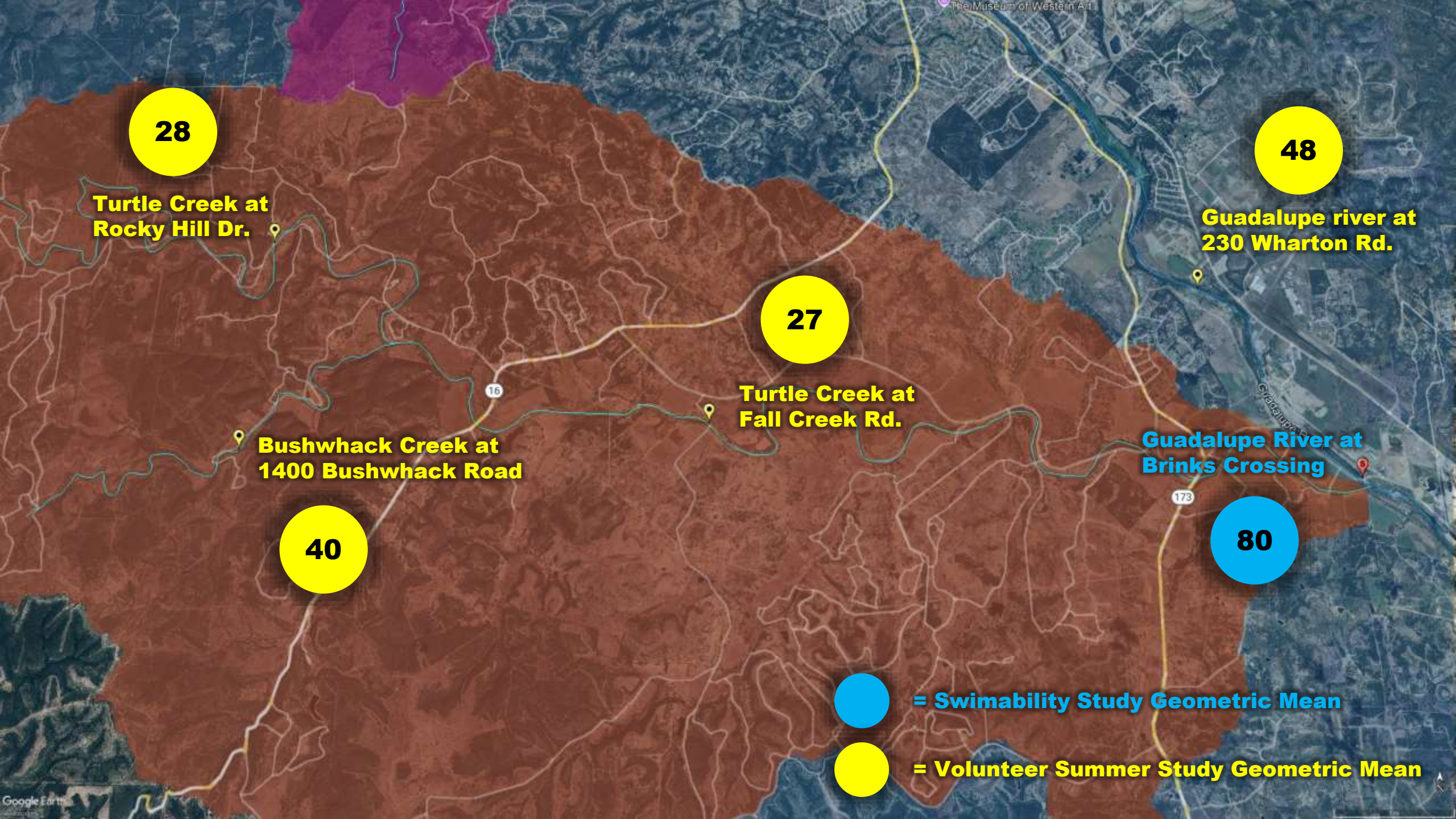
**GR at Flat Rock Boat Ramp
Sampled by Clark Williams**



**GR at Flat Rock Dog Park
Sampled by Sherry Wilson**







28

Turtle Creek at Rocky Hill Dr.

48

Guadalupe river at 230 Wharton Rd.

27

Turtle Creek at Fall Creek Rd.

40

Bushwhack Creek at 1400 Bushwhack Road

80

Guadalupe River at Brinks Crossing



= Swimability Study Geometric Mean



= Volunteer Summer Study Geometric Mean

**GR at 230 Wharton Rd.
Sampled by John Hornung**



**Turtle Creek at Rocky Hill Dr.
Sampled by Kathy Loring**



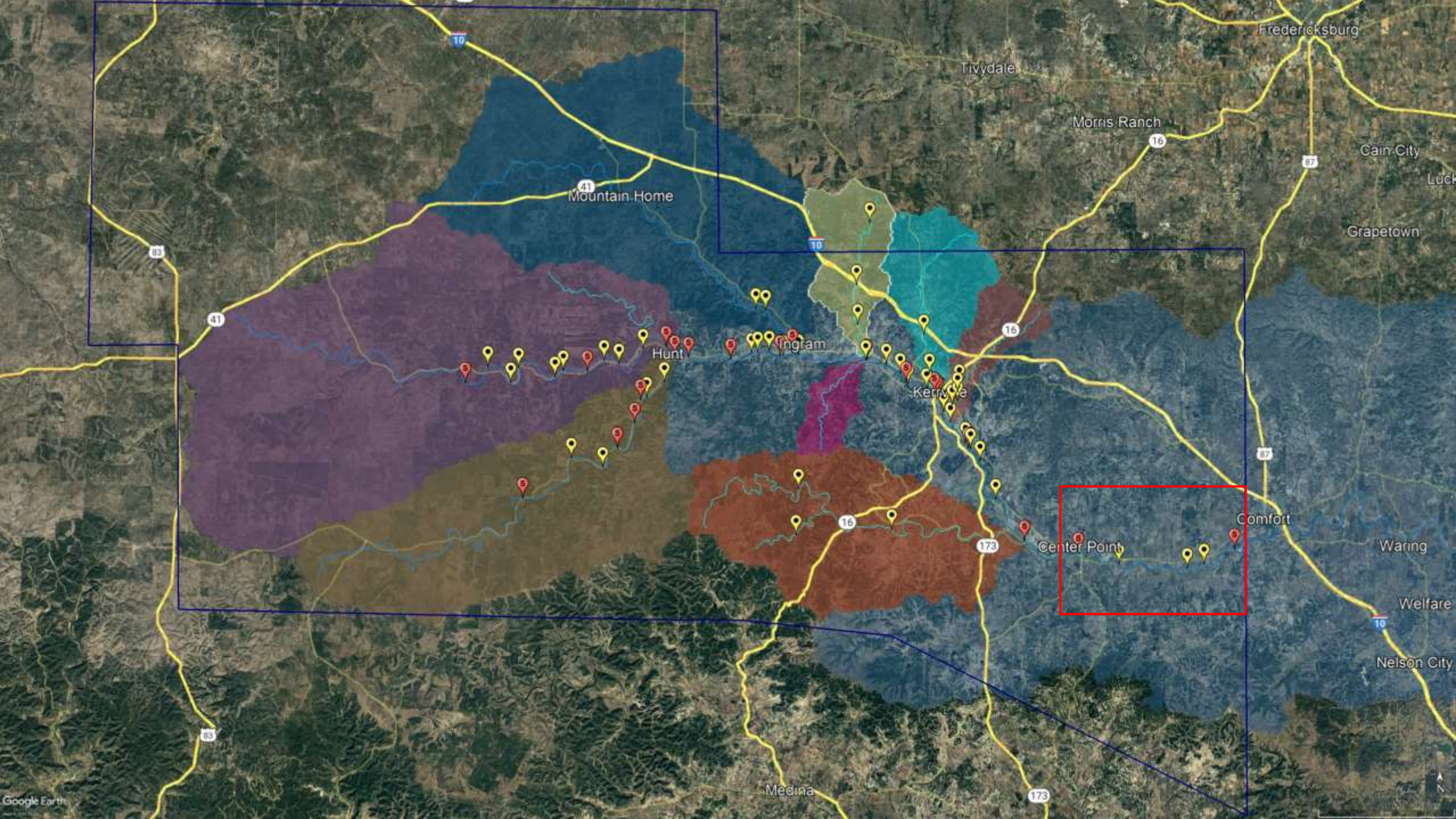
40

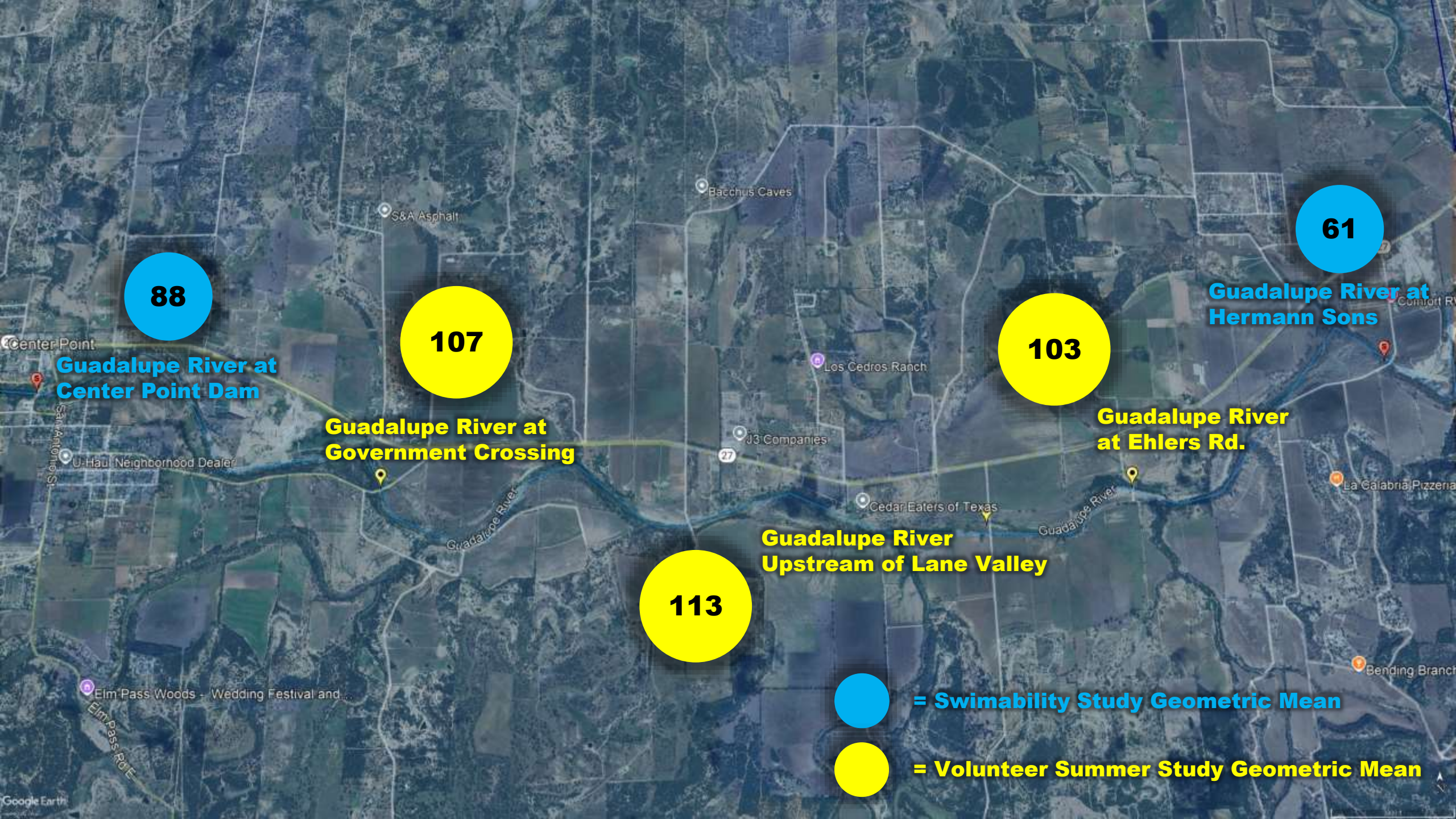
**Bushwhack Creek at 1400 Bushwhack Rd.
Sampled by Clark Williams**

**Turtle Creek at Fall Creek Rd.
Sampled by Kathy Loring**



27





88

**Guadalupe River at
Center Point Dam**

107

**Guadalupe River at
Government Crossing**

113

**Guadalupe River
Upstream of Lane Valley**

103

**Guadalupe River
at Ehlers Rd.**

61

**Guadalupe River at
Hermann Sons**



= Swimability Study Geometric Mean



= Volunteer Summer Study Geometric Mean

**GR at Government Crossing
Sampled by Lorena Lozano**



113

**GR Upstream of Lane Valley
Sampled by Paz Lovett**



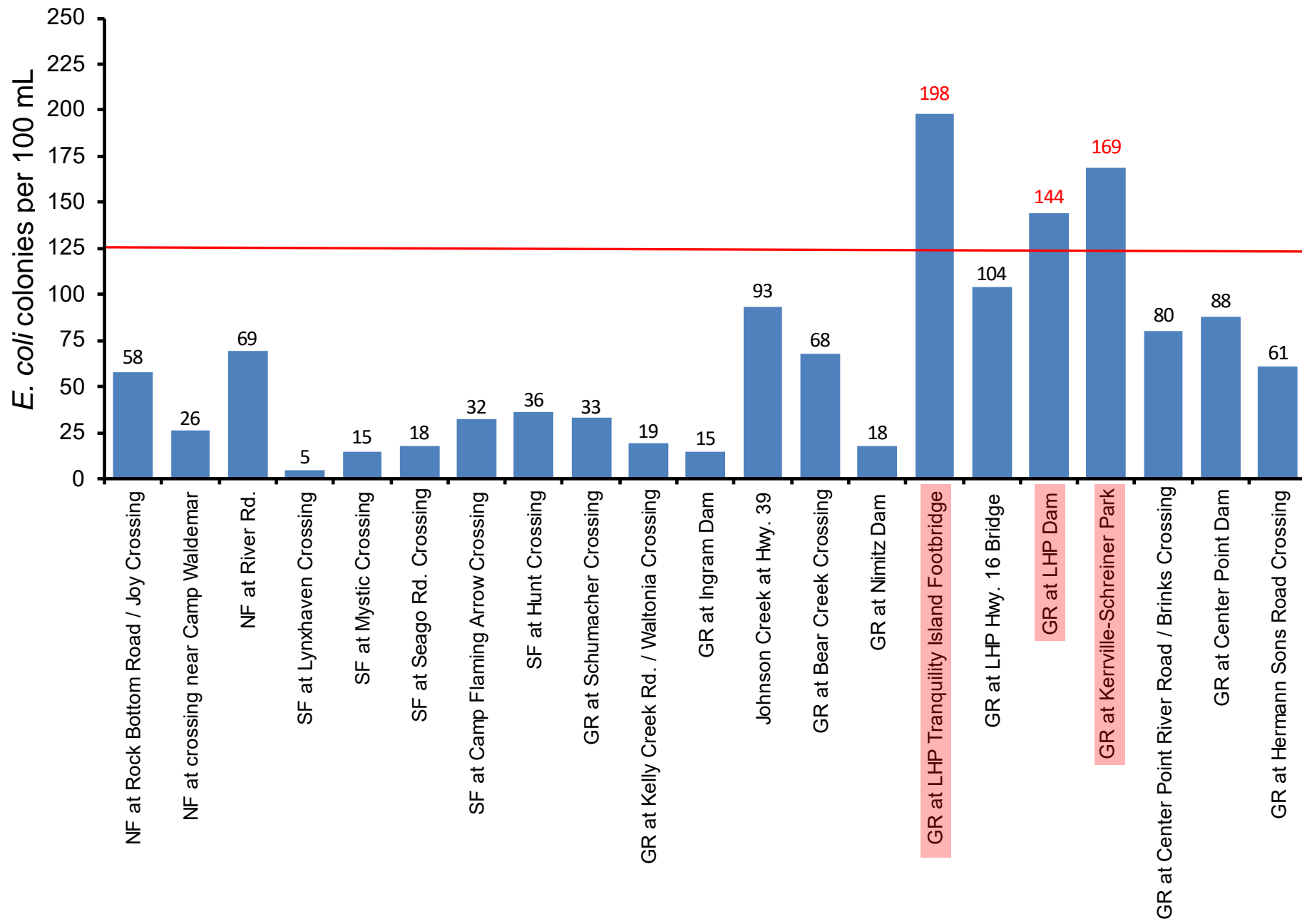
107

**GR at Ehlers Rd.
Sampled by Lorena Lozano**

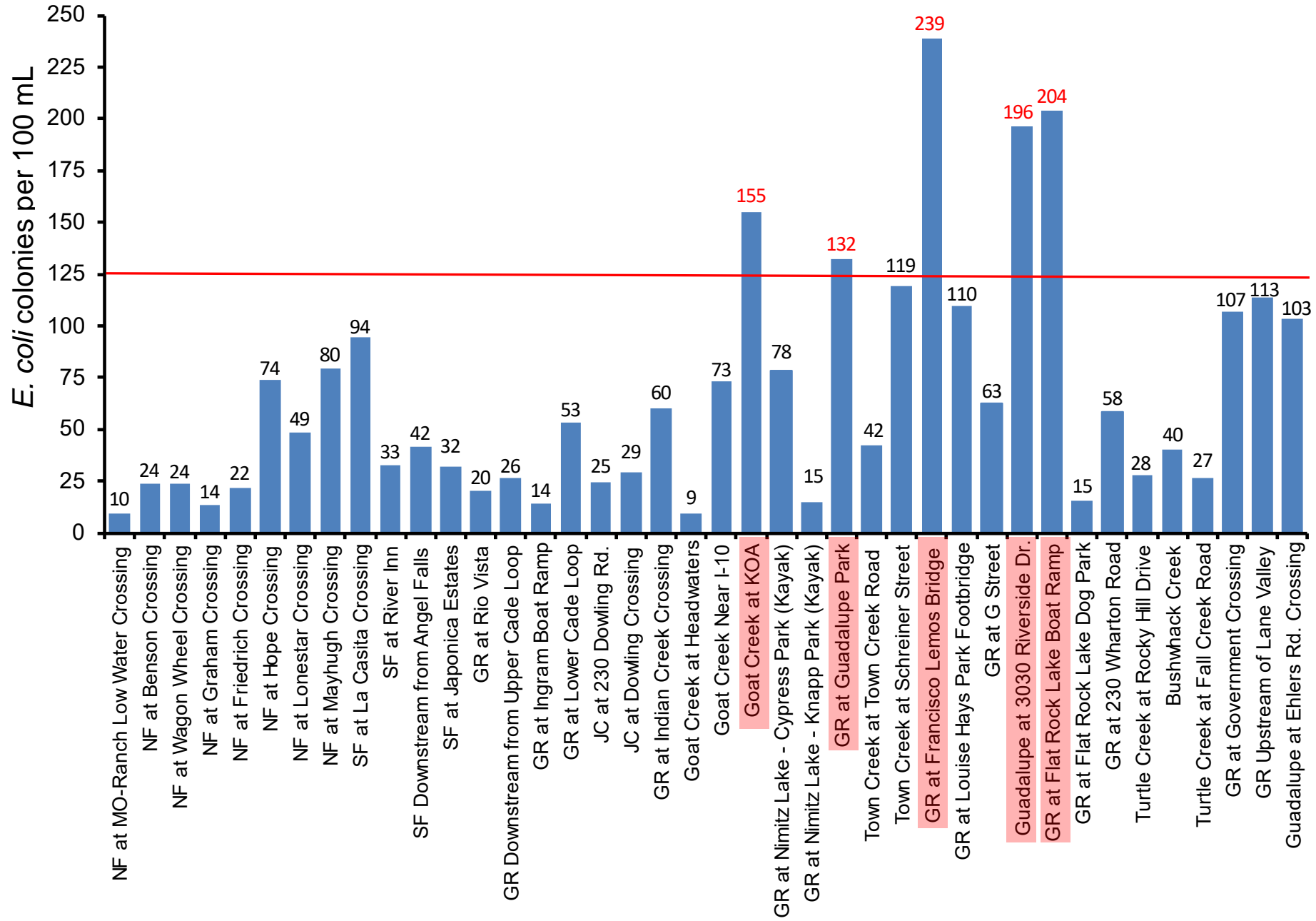


103

Swimability Geometric Means



Volunteer Geometric Means



Final Notes

- Complete the survey
- Adopt site as a clean up location
- Other volunteer opportunities
 - UGRA River Clean Up
- Group picture
- Any questions?

THANK YOU!

See you next summer!